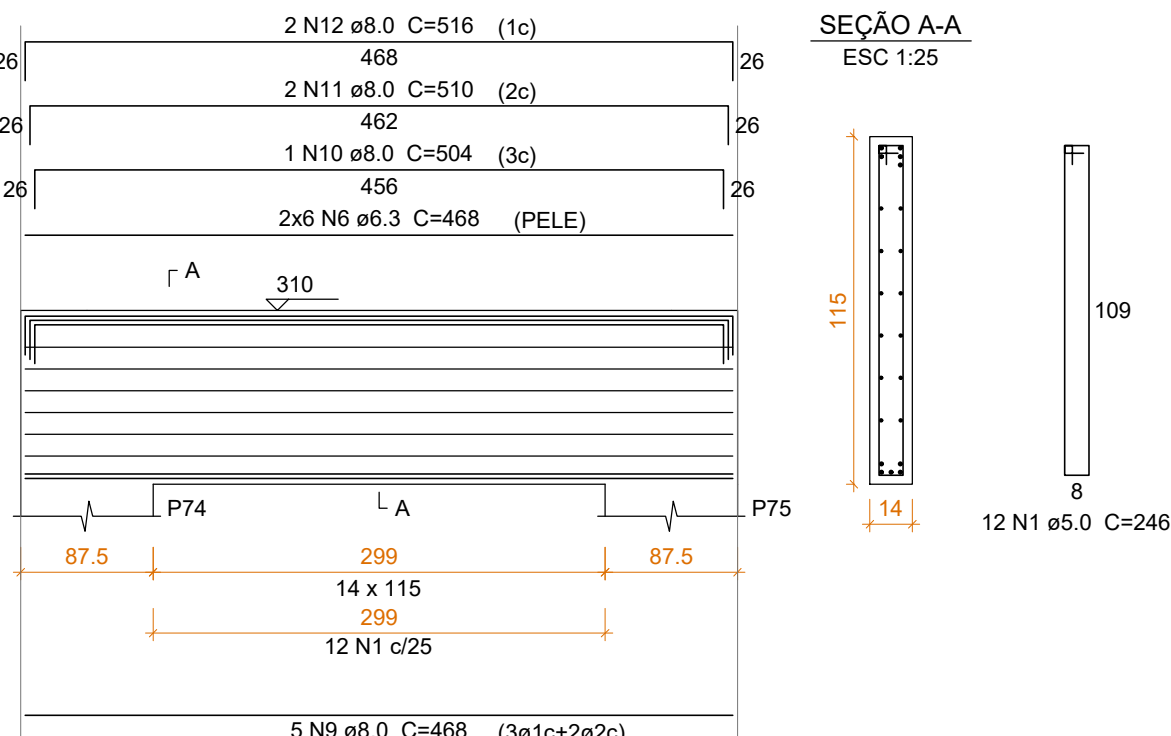


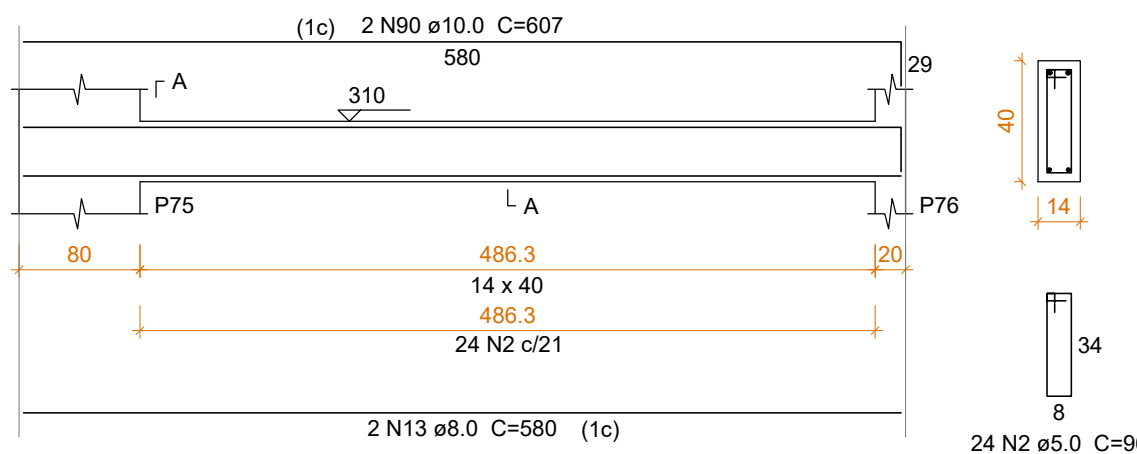
VC3 55

ESC 1:50



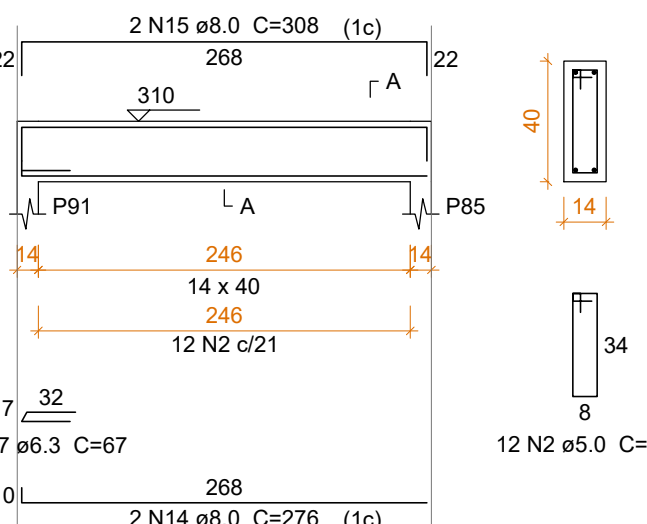
VC3 56

ESC 1:50



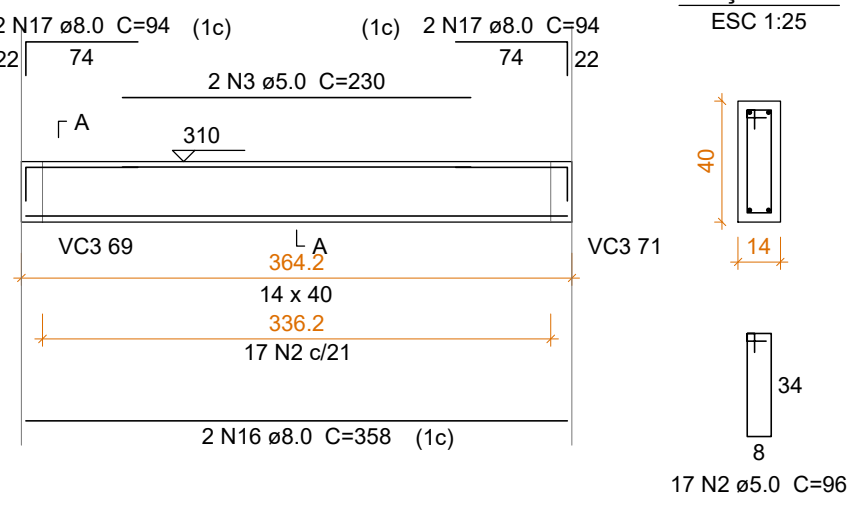
VC3 57

ESC 1:50



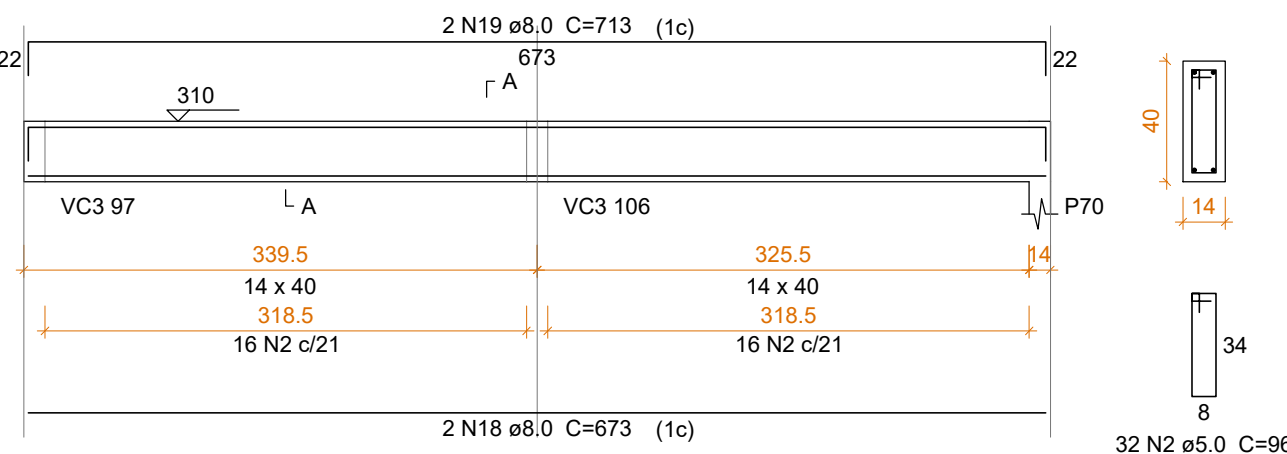
VC3 58

ESC 1:50



VC3 59

ESC 1:50

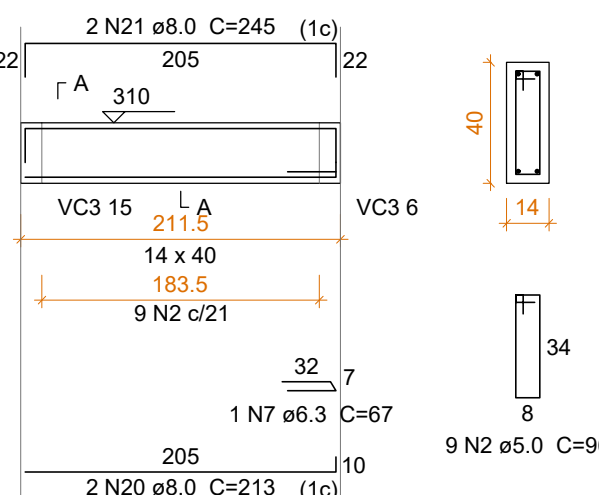


Relação do aço

ACO	N	DIAM (mm)	QUANT	C.UNIT (cm)	C.TOTAL (cm)
CA60	1	5.0	12	246	2952
	2	5.0	96	50208	50208
	3	5.0	2	230	460
	4	5.0	2	365	730
	5	5.0	2	256	512
	6	6.3	12	468	5616
	7	6.3	2	67	134
	8	6.3	4	533	2132
	9	8.0	5	468	2340
	10	8.0	1	504	504
	11	8.0	2	510	1020
	12	8.0	2	516	1032
	13	8.0	2	580	1160
	14	8.0	2	276	552
	15	8.0	2	308	616
	16	8.0	2	358	716
	17	8.0	4	94	376
	18	8.0	2	673	1346
	19	8.0	2	713	1426
	20	8.0	2	213	426
	21	8.0	2	245	490
	22	8.0	4	363	1452
	23	8.0	2	403	806
	24	8.0	2	553	1106
	25	8.0	2	134	268
	26	8.0	2	114	228
	27	8.0	2	405	810
	28	8.0	2	221	442
	29	8.0	2	262	524
	30	8.0	2	340	680
	31	8.0	2	380	760
	32	8.0	2	332	664
	33	8.0	2	372	744
	34	8.0	2	244	488
	35	8.0	2	284	568
	36	8.0	2	341	682
	37	8.0	2	373	746
	38	8.0	2	408	816
	39	8.0	1	415	415
	40	8.0	2	454	908
	41	8.0	4	333	1332
	42	8.0	1	173	173
	43	8.0	2	374	748
	44	8.0	2	545	1090
	45	8.0	1	210	210
	46	8.0	1	519	519
	47	8.0	2	569	1138
	48	8.0	2	426	852
	49	8.0	2	137	274
	50	8.0	1	87	87
	51	8.0	2	444	888
	52	8.0	2	385	770
	53	8.0	4	533	2132
	54	8.0	4	225	900
	55	8.0	2	245	490
	56	8.0	2	277	554
	57	8.0	2	318	636
	58	8.0	2	465	930
	59	8.0	1	169	169
	60	8.0	1	107	107
	61	8.0	2	507	1014
	62	8.0	2	266	532
	63	8.0	1	275	275
	64	8.0	2	544	1088
	65	8.0	2	183	366
	66	8.0	2	186	372
	67	8.0	2	155	310
	68	8.0	2	591	1182
	69	8.0	6	369	2214
	70	8.0	3	157	471
	71	8.0	1	176	176
	72	8.0	2	558	1116
	73	8.0	2	331	662
	74	8.0	2	559	1118
	75	8.0	1	119	119
	76	8.0	1	176	176
	77	8.0	2	179	358
	78	8.0	1	114	114
	79	8.0	1	171	171
	80	8.0	2	174	348
	81	8.0	2	354	708
	82	8.0	2	406	812
	83	8.0	2	385	770
	84	8.0	2	425	850
	85	8.0	2	374	748
	86	8.0	2	414	828
	87	8.0	2	409	818
	88	8.0	2	189	378
	89	8.0	2	229	458
	90	10.0	2	607	1214
	91	10.0	1	142	142
	92	10.0	1	132	132
	93	10.0	2	533	1066

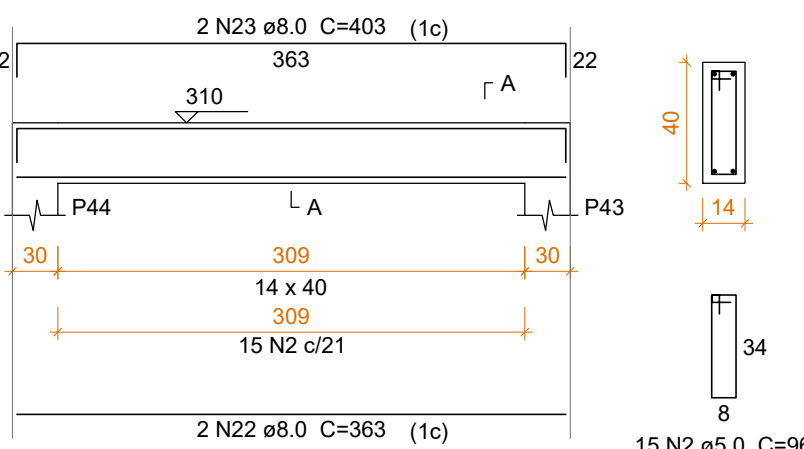
VC3 60

ESC 1:50



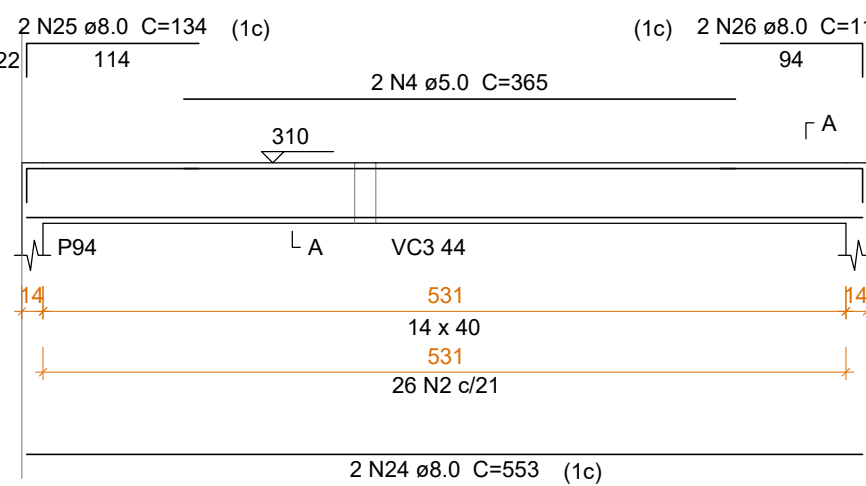
VC3 61

ESC 1:50



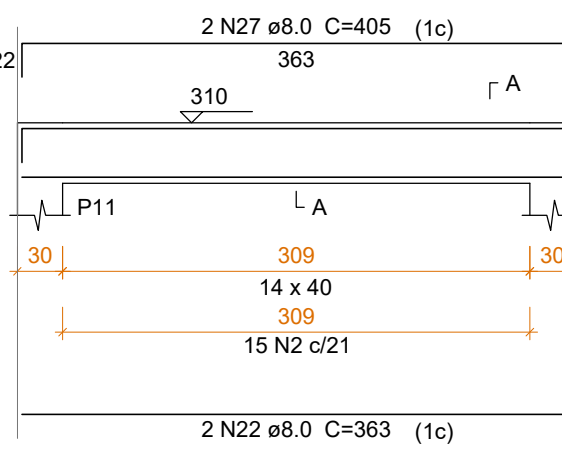
VC3 62

ESC 1:50



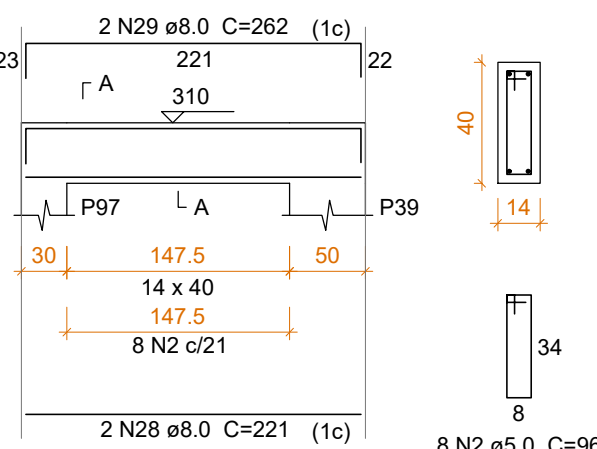
VC3 63

ESC 1:50



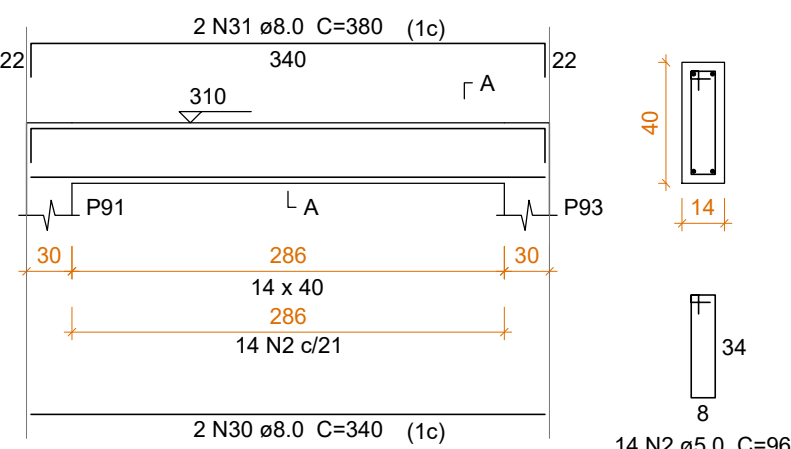
VC3 64

ESC 1:50



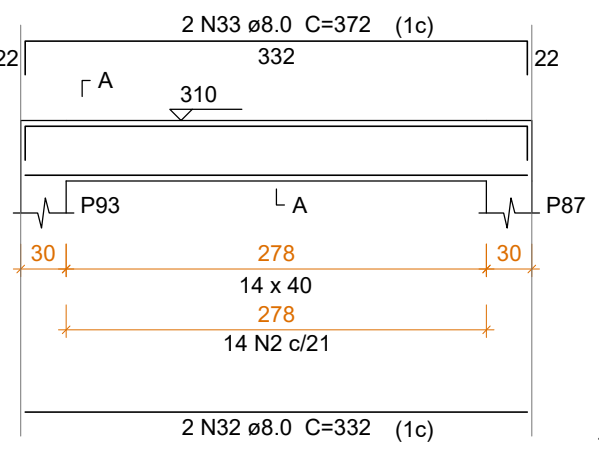
VC3 65

ESC 1:50



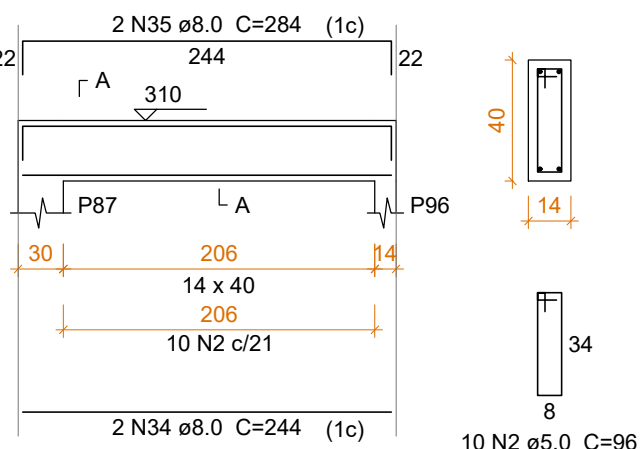
VC3 66

ESC 1:50



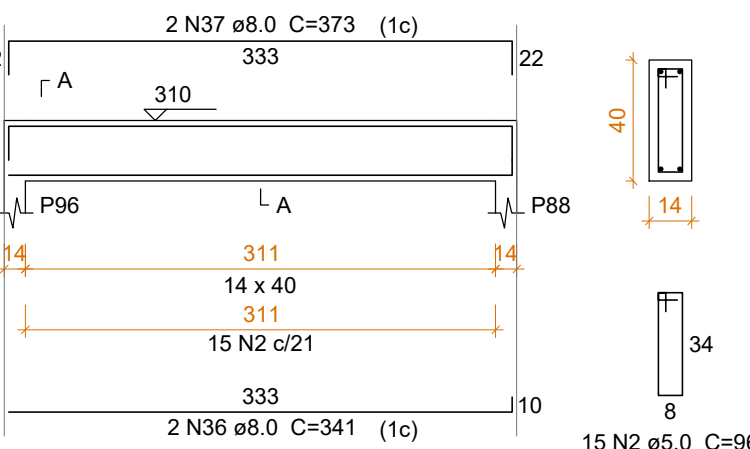
VC3 67

ESC 1:50



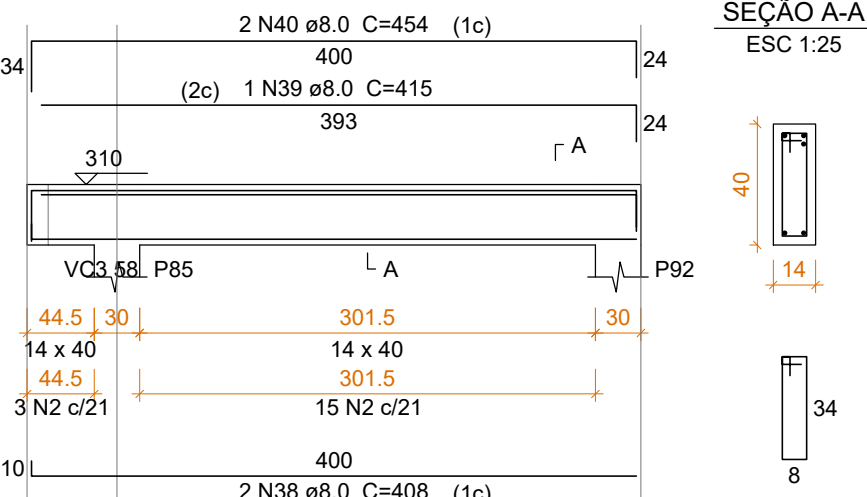
VC3 68

ESC 1:50



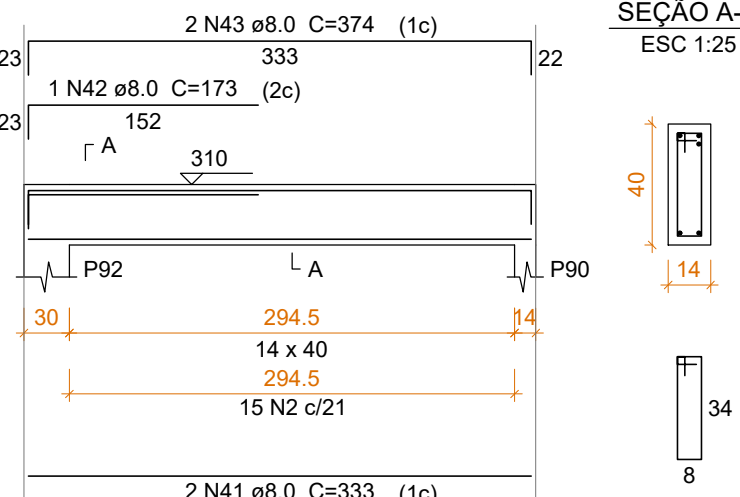
VC3 69

ESC 1:50



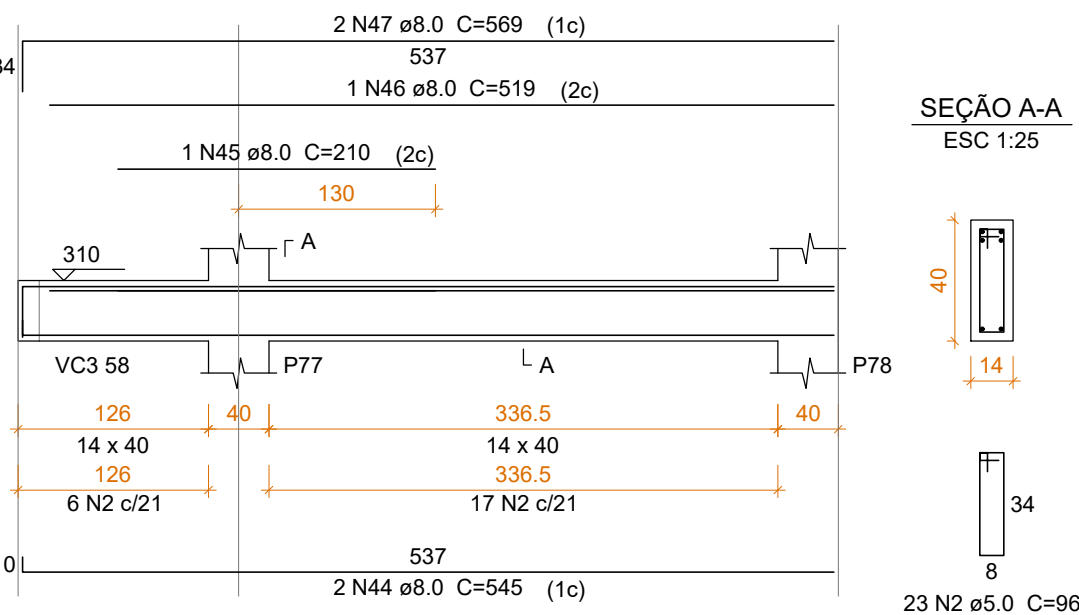
VC3 70

ESC 1:50



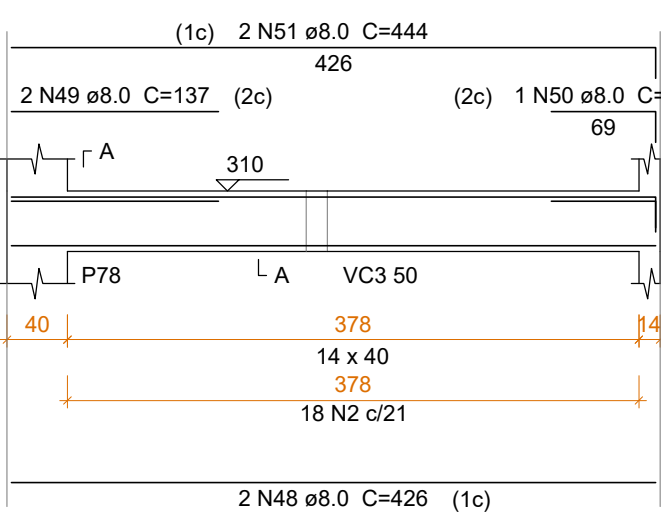
VC3 71

ESC 1:50



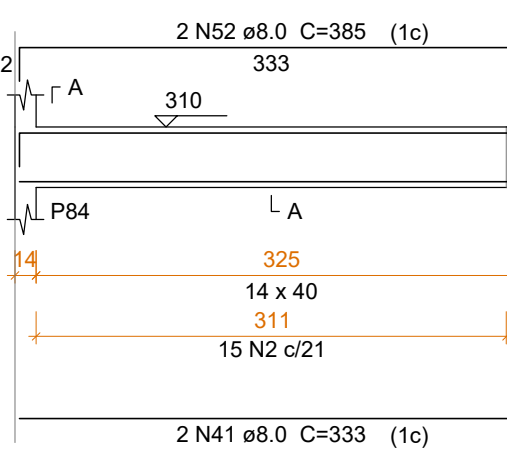
VC3 72

ESC 1:50



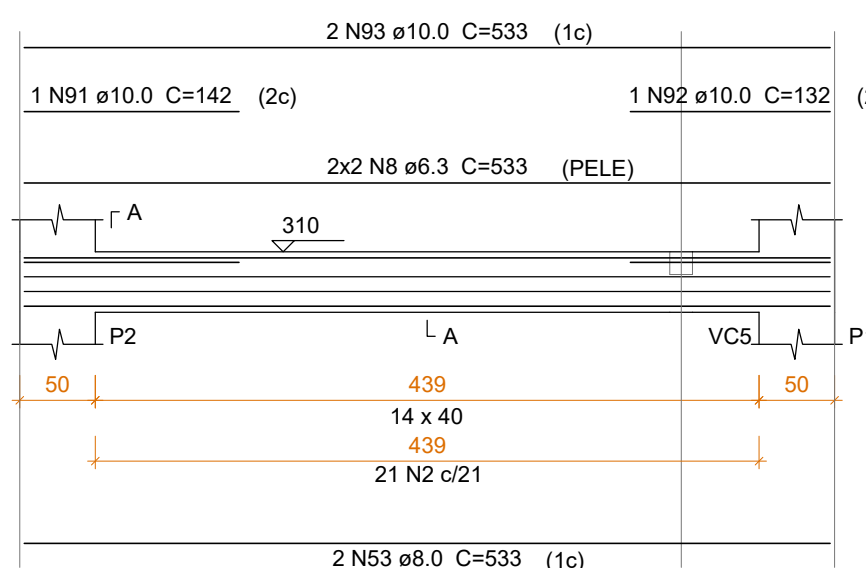
VC3 73

ESC 1:50



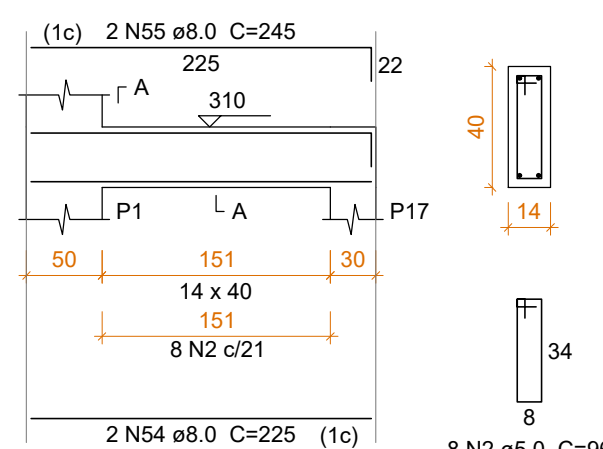
VC3 74

ESC 1:50



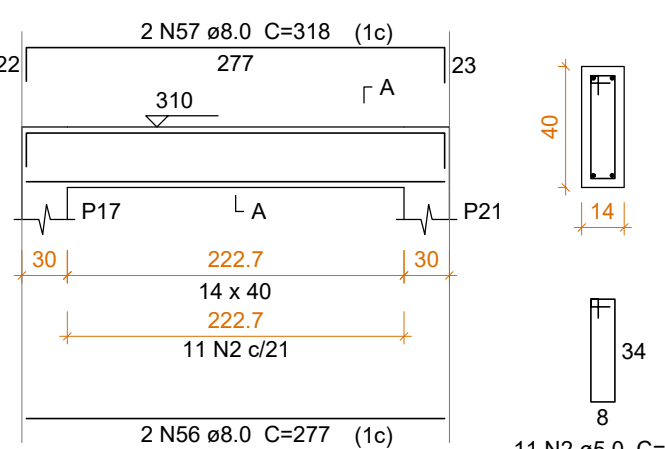
VC3 75

ESC 1:50



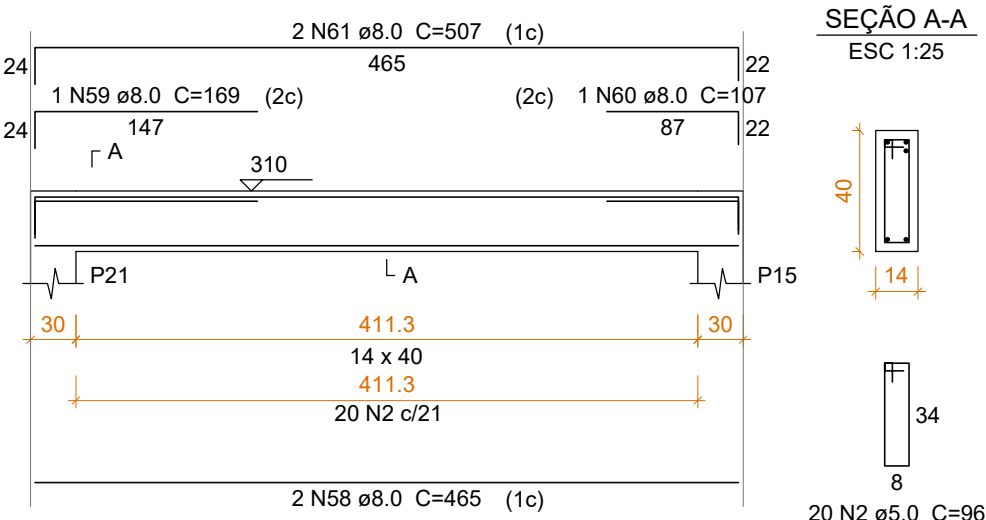
VC3 76

ESC 1:50



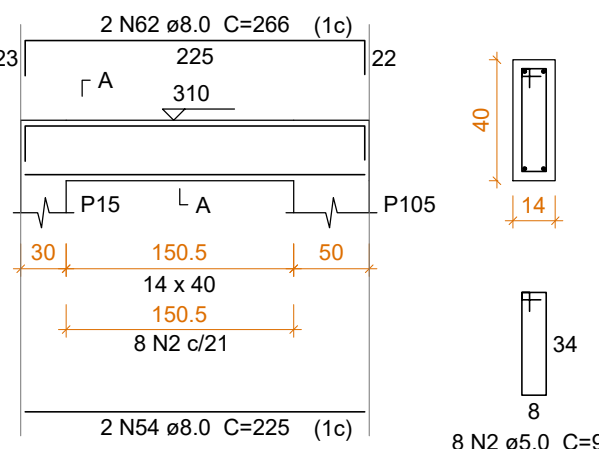
VC3 77

ESC 1:50



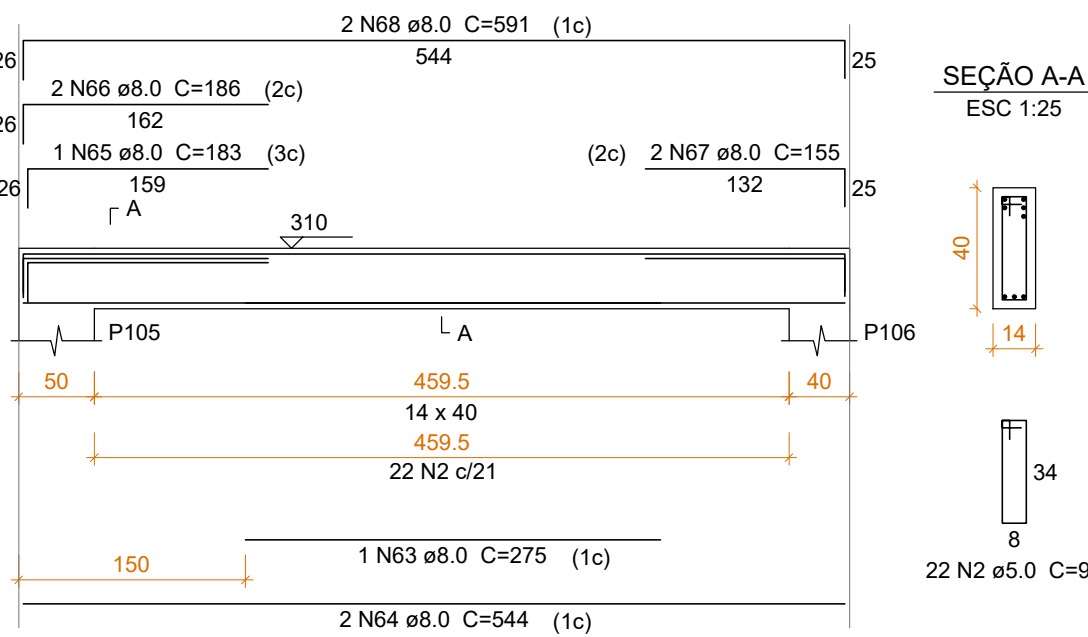
VC3 78

ESC 1:50



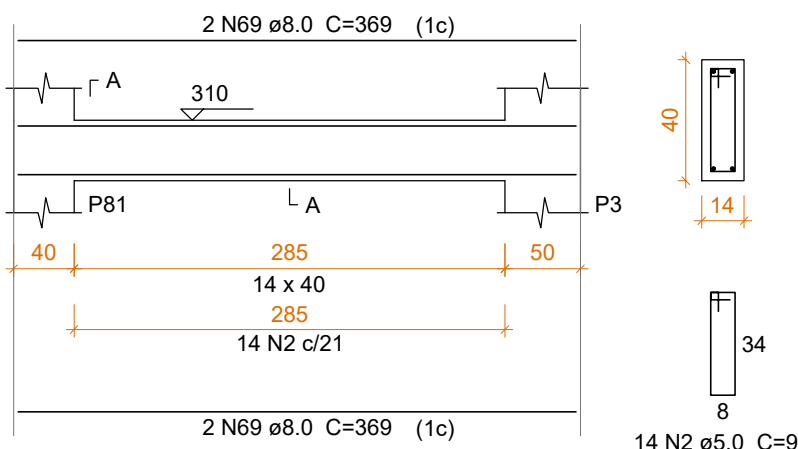
VC3 79

ESC 1:50



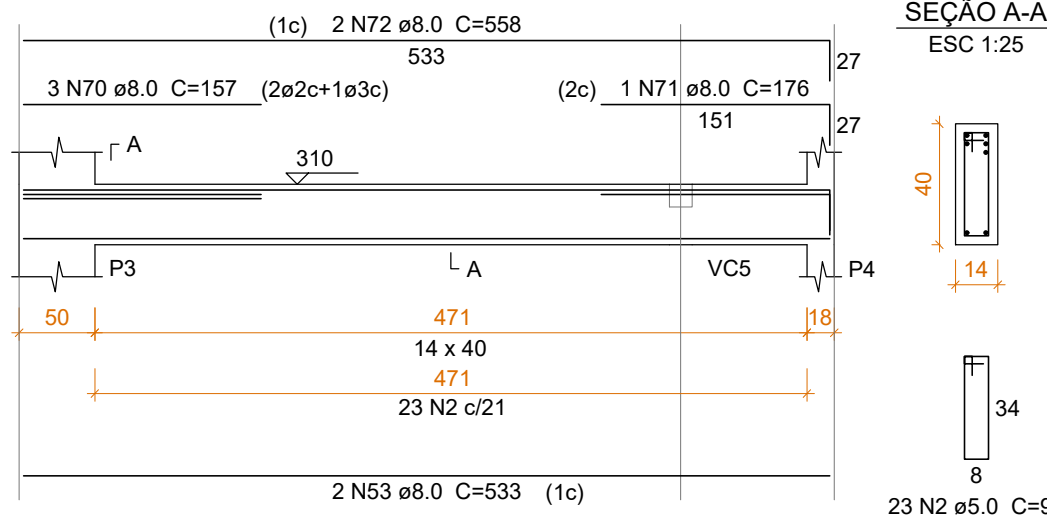
VC3 80

ESC 1:50



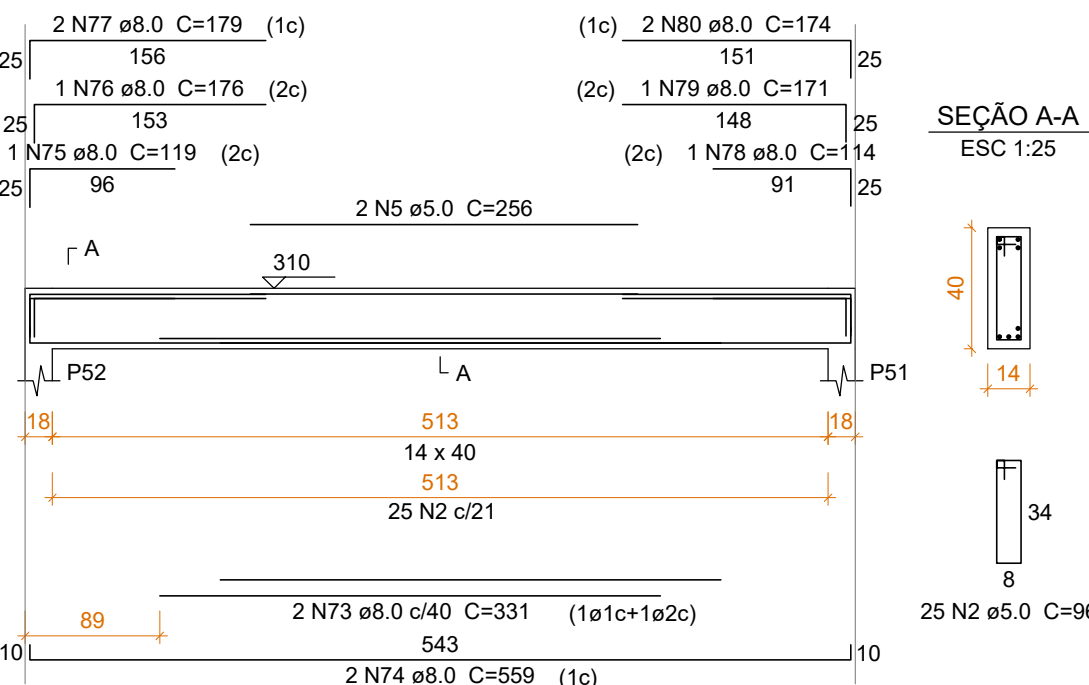
VC3 81

ESC 1:50



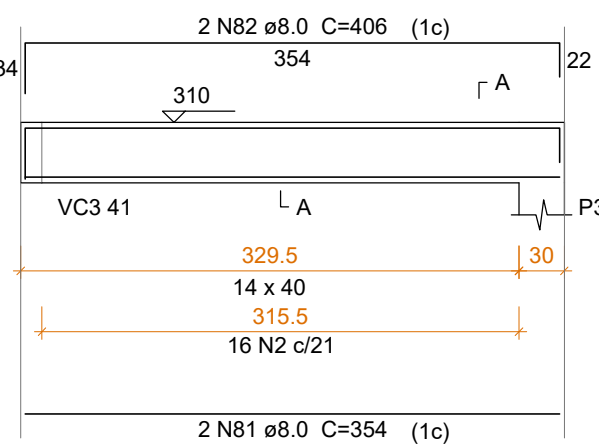
VC3 82

ESC 1:50



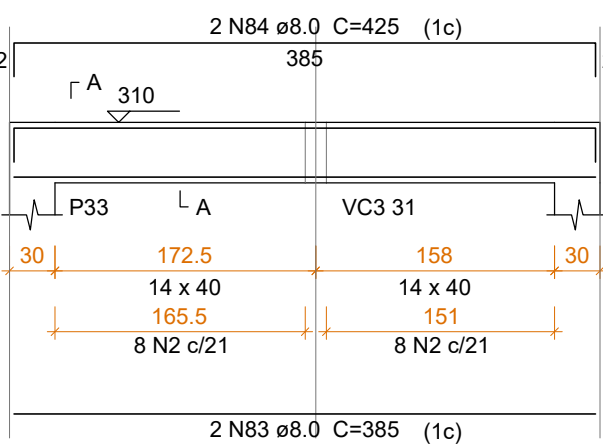
VC3 83

ESC 1:50



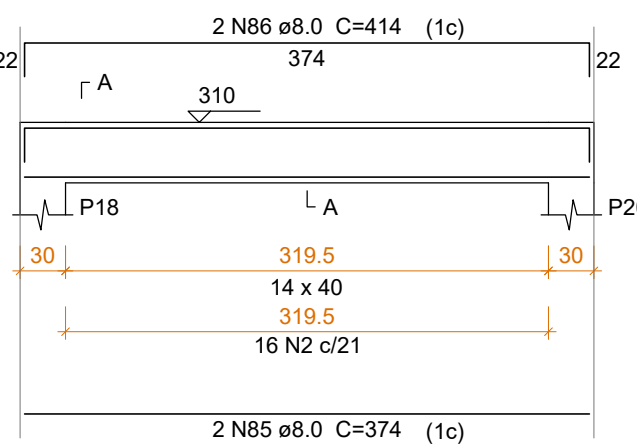
VC3 84

ESC 1:50



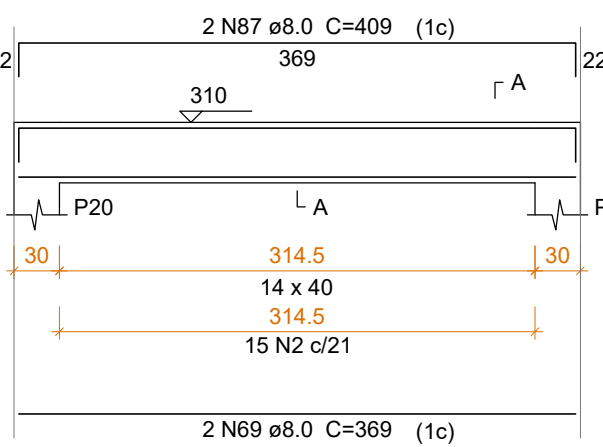
VC3 85

ESC 1:50



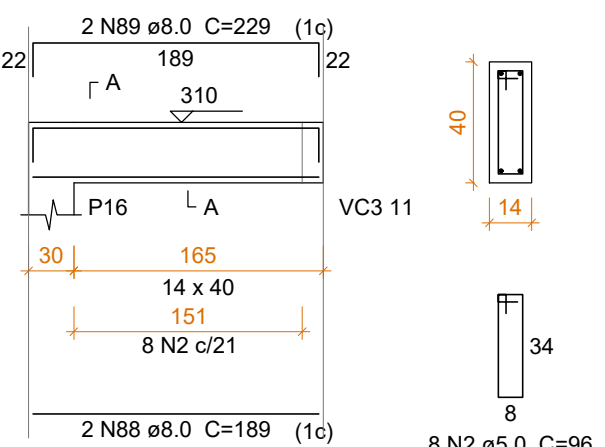
VC3 86

ESC 1:50




VC3 87

ESC 1:50



ARMAÇÃO VIGAS - COBERTURA NIVEL 310

ESCALA 1:50

1	Emissão Inicial	11/2018	ES
REVISÃO	DESCRIÇÃO	DATA	RESPONSÁVEL
 <div>ASSOCIAÇÃO DOS MUNICÍPIOS DA REGIÃO DA FOZ DO RIO ITAJAÍ Rua Luiz Lopes Gonzaga, 1655 - Bairro São Vicente - CEP 88309-421 - Itajaí-SC 050.968-0 www.amfri.org.br amfri@amfri.org.br</div>			
Prefeitura Municipal de Itajaí Estado de Santa Catarina			
UNIDADE BÁSICA DE SAÚDE RIO BONITO Rua Arq. Nilson Edson dos Santos - São Vicente			
Data	Projeto	Conteúdo da Folha	
11/2018	PROJETO ESTRUTURAL	Vigas Nível 310 - Prancha de vigas 03/04	
Escala	Indicada		
Desenho	Prefeitura Municipal	Responsável Técnico	
Enio Sampaio			
Folha	13/20	Emerson Roberto Duarte Secretário Municipal de Saúde	
		Ralf Nordt Engenheiro Civil - CREA/SC - 018759-9	